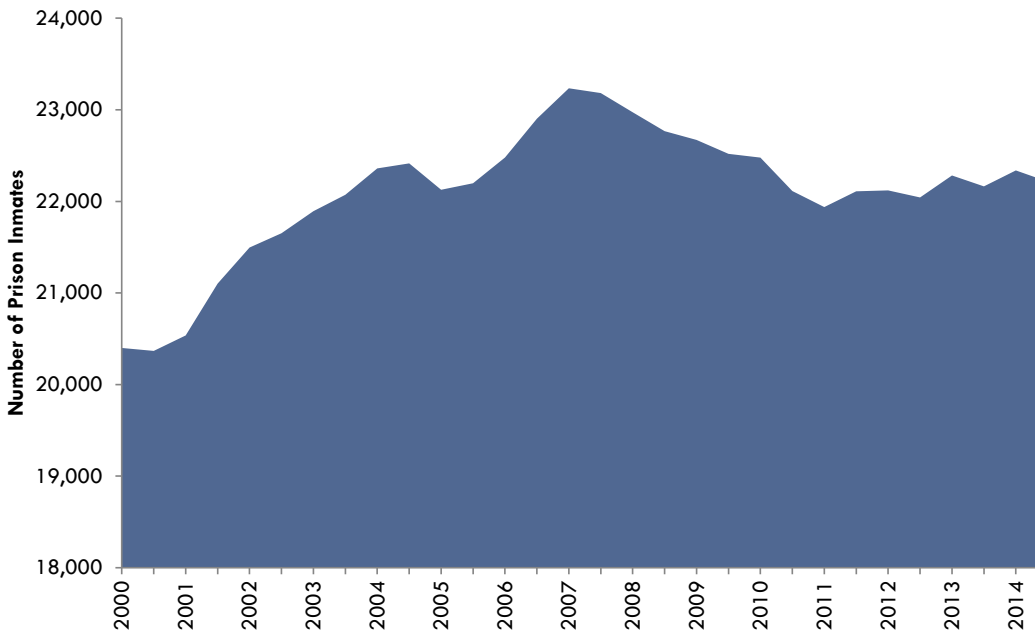


# THE WISCONSIN PRISON POPULATION

Over the past couple of years the Wisconsin Department of Corrections (WI DOC) has been moving forward with an effort to take very large and complex datasets, validate them, analyze them, and then present information in an understandable form that accurately reflects trends and patterns of the adult prison population. The purpose of this effort is to provide information to WI DOC staff, policy makers, criminal justice partners, and the public to help better inform them of the adult prison component of the criminal justice system. Information presented in this article represents a sample of data currently being analyzed on admissions, point-in-time populations, and releases from prison over the last 15 to 25 years.



Note: Point-in-time numbers exclude temporary holds.

**Overall Point-in-Time Prison Populations (June 2000-December 2014):** The graph above displays point-in-time “snapshots” of the prison population from June 2000 to December 2014 (with a point-in-time presented for June 30<sup>th</sup> and December 31<sup>st</sup> of each year).

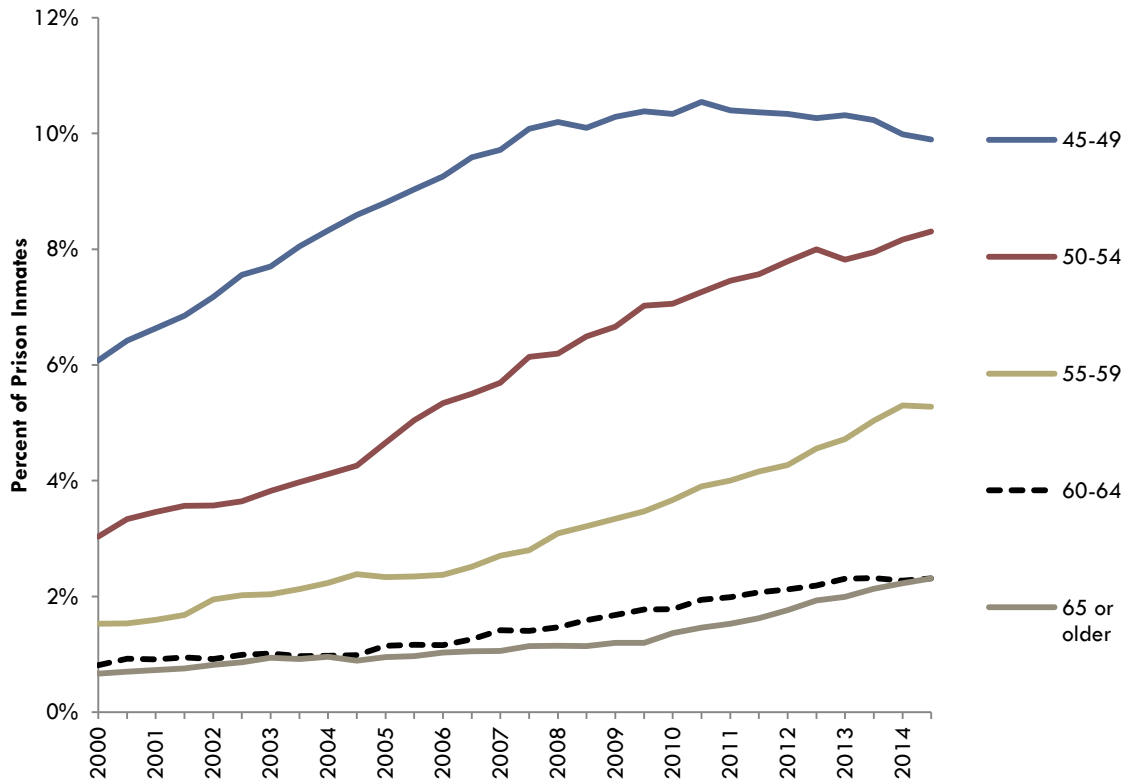
	2000	2014	% Change
<b>Overall Population</b>	20,399	22,215	+ 8.9%
<b>Male</b>	18,979	20,871	+ 10.0%
<b>Female</b>	1,420	1,344	- 5.4%



## 2014 WI Prison End-of-Year Population Snapshot

- 38 is average age
- 94% are male
- 41% are Black, 55% are White, and 9% report Hispanic or Latino ethnicity
- 40% of males and 43% of females report having dependent children
- 7% report having military experience
- 33% of males and 77% of females have a mental health condition
- 79% have an assessed substance abuse treatment need
- 66% of males and 72% of females report they have completed high school (or equivalency) or have completed some post-secondary education
- 67% of have committed a violent crime
- 35% have five or more years left to serve in prison

**Age:** The percentage of older inmates in WI DOC prisons has seen a notable increase over the last 15 years. Shown below is the percentage of inmates aged 45 and older from June 2000 to December 2014.



The percentage of inmates **45 and older** more than **doubled** from 2000 to 2014, increasing from **12.1%** to **27.9%** of the total prison population.

Note: Point-in-time numbers exclude temporary holds.

**Race and Ethnicity:**

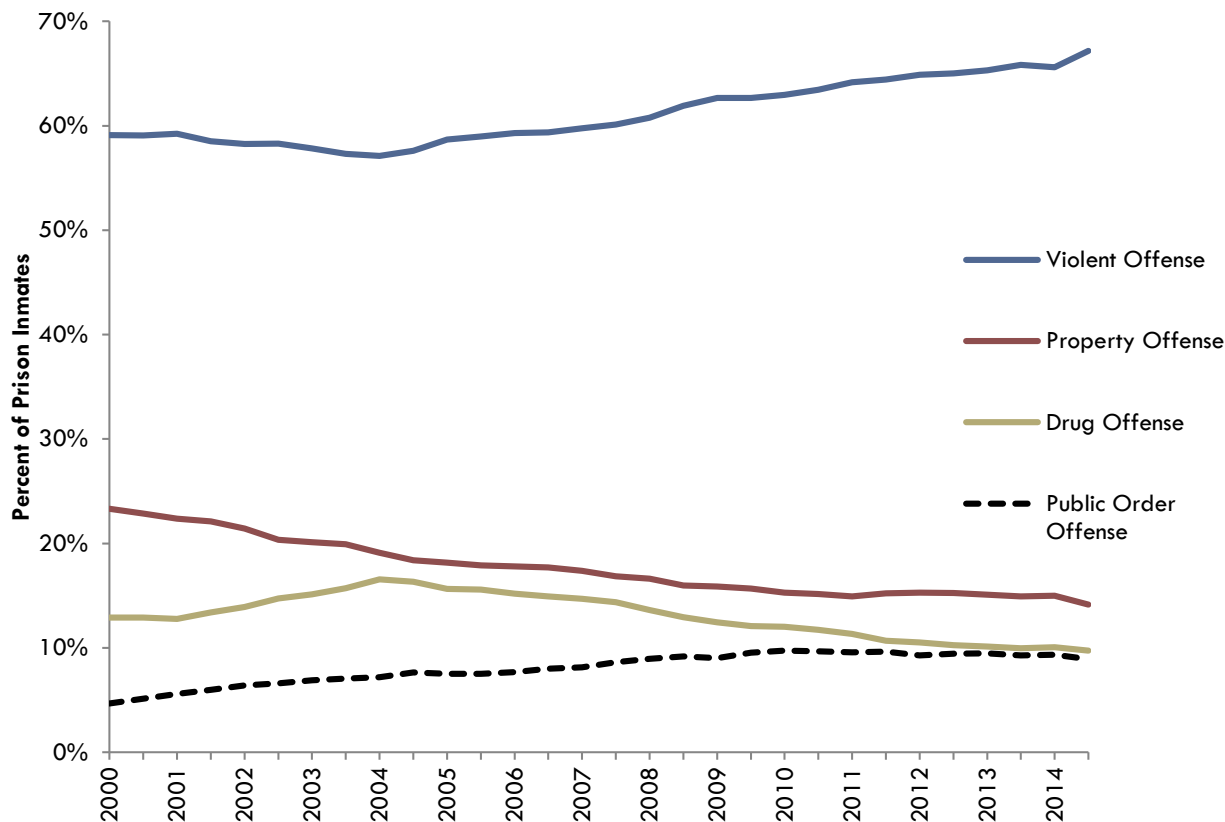
Race	Male		Female	
	2000	2014	2000	2014
White	48.8%	53.6%	47.5%	69.8%
Black	47.4%	42.0%	48.4%	23.2%
American Indian/Alaskan Native	3.0%	3.2%	3.6%	6.0%
Asian or Pacific Islander	0.7%	1.0%	0.4%	1.0%
Unknown	0.1%	0.1%	0.2%	0.0%
<b>Ethnicity*</b>				
Hispanic or Latino	7.6%	9.5%	4.9%	3.1%

\*Inmates in all race categories can identify themselves as Hispanic or Latino.

*Since 2000 ...*

- The overall population of **White** inmates increased by a factor of 12.1% (5.9 percentage points) while the percentage of **Black** inmates decreased by a factor of 13.9% (6.6 percentage points).

**Most Serious Offense (June 2000-December 2014):** Many offenders are convicted of multiple offenses. For this reason, an offender's most serious offense was selected for this analysis. Offenses fall into four categories (in order of seriousness): violent, property, drug, and public order offenses.



Note: Point-in-time numbers exclude temporary holds.

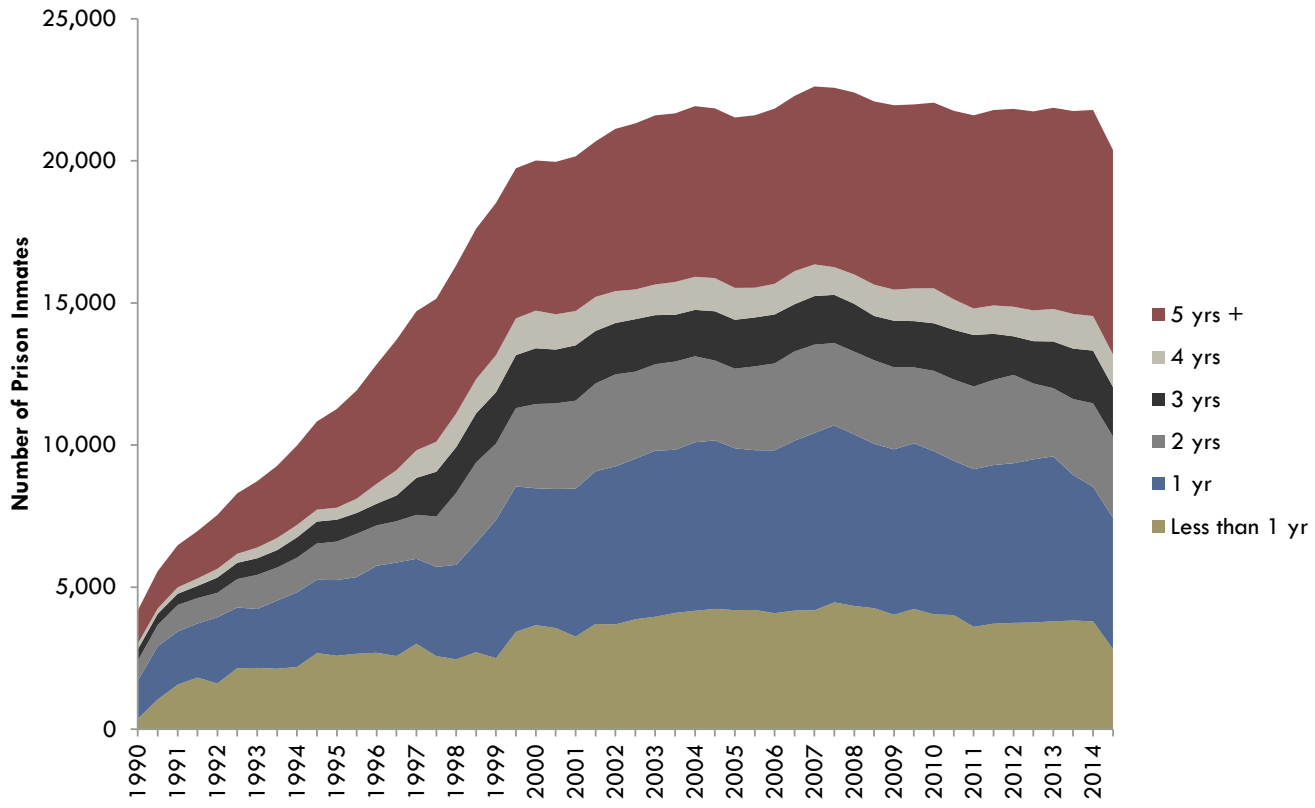
**Persons convicted of a violent crime have made up approximately 60% or more of the inmate population for the past 15 years**

**Most Common Offenses in Each Category on December 31, 2014**

Violent Offense		Property Offense		Drug Offense		Public Order Offense	
Statute Description	N	Statute Description	N	Statute Description	N	Statute Description	N
Armed Robbery	1,809	Burglary-Building or Dwelling	1,665	Manufacture/Deliver Heroin (<3g)	244	Operating while Under the Influence	1,063
First Degree Intentional Homicide	1,504	Theft-Moveable Property	407	Possession of Narcotic Drugs	189	Possession of Firearm by Felon	276
Second Degree Sexual Assault of Child	1,396	Misappropriate ID Info-Obtain Money	209	Manufacture/Deliver Cocaine (<=1g)	129	Possession of Child Pornography	199
First Degree Sexual Assault of Child	1,252	Retail Theft-Intentionally Take	159	Possession of THC (2nd+ Offense)	105	Failure to Support Child (120 Days+)	97
Robbery with Use of Force	577	Forgery-Uttering	155	Manufacture/Deliver Cocaine (>1-5g)	94	Bail Jumping-Felony	76

\* Point-in-time numbers exclude temporary holds.

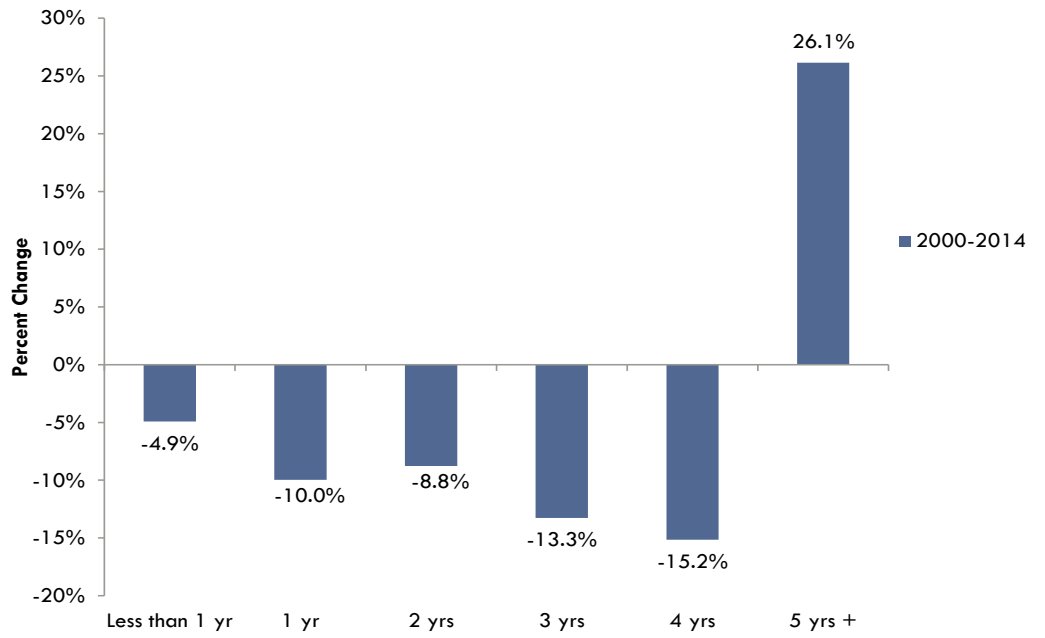
**Time Left to Serve (June 1990-December 2014):** Time left to serve is calculated as the time between each six-month point-in-time date and the actual or projected end date of an inmate’s incarceration portion of his or her sentence. While the time left to serve analysis does not represent the overall sentence an inmate must serve in prison, it offers one possible explanation for changes in the prison population over time - such as why the general inmate population is getting older.



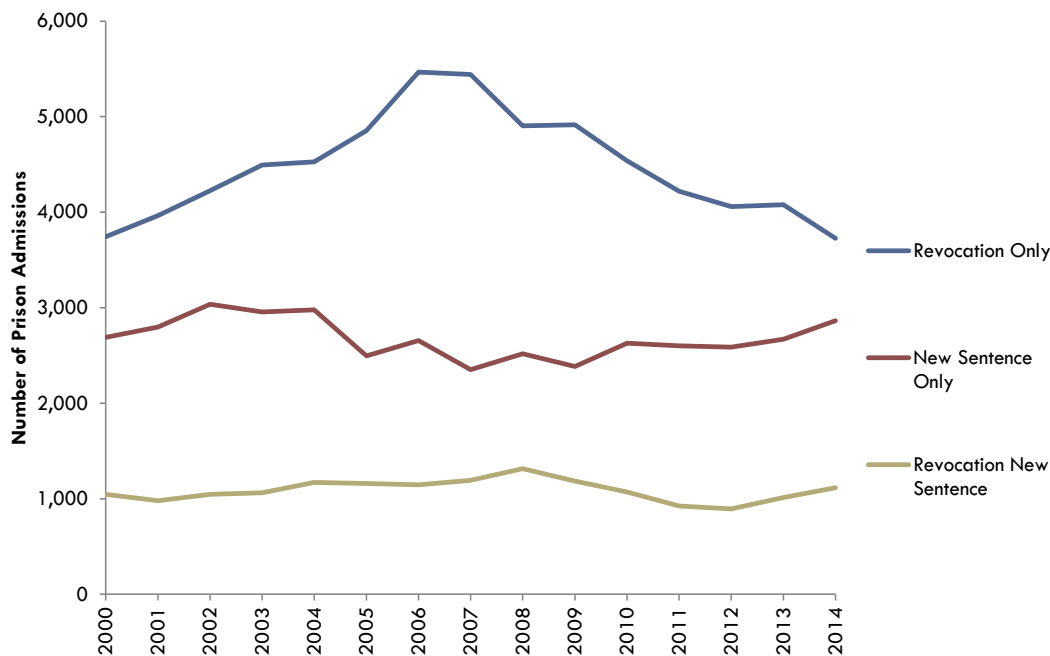
Note: Point-in-time numbers exclude temporary holds.

**Percent Change in Time Left to Serve, 2000 compared to 2014:**

- The percentage of inmates with **four or less** years to serve has **decreased**
- The percentage of inmates with **five or more** years left to serve has **increased by a factor of over 25%**



**Prison Admissions by Type (2000-2014):** The graph below shows all physical admissions to WI DOC adult prisons and contract facilities between 2000 and 2014.



**Admission Trends:**

- Revocation admissions peaked in 2006-2007, and have since been on a decline
- New sentence admissions (with and without revocations) have remained stable

Note: Admission numbers exclude temporary holds.

---

**On average, in 2014 the WI DOC admitted over 700 inmates per month compared to 300 per month in 1990**

---

For other WI DOC statistics such as recidivism rates, reincarceration rates, and other data trends please visit <http://doc.wi.gov/about/data-and-research>.